



Fiber Trailer

Model: 8.5x12FT

Fiber Optic Splice Trailer - 8 1/2 x 12ft

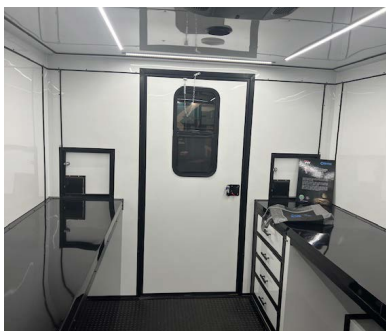
We also offer a 6x10ft & 7x12ft Fiber Optic Splice trailer along with Mobile Command Centers, and Fiber Optic Splice Capsule that is mounted on an 8ft truck bed.

Our mobile fiber splicing trailers are cost-effective, customized to your needs and designed for efficient fiber-optic splicing and testing. With ample room to accommodate crew and all necessary equipment and tools required for fiber-optic splicing.

Includes dual fiber entry doors, generator storage, generator input and multiple GFCI electrical outlets - inside and outside. 13.5K BTU Heat/AC and vents for your comfort.

Highly customizable -- contact us for a detailed quote.

We welcome manufacturing tours!



Fiber Trailer - 8.5x12FT

Specifications

Trailer

- ❖ Metal exterior available in a variety of colors
- ❖ V-Nose with vertical ATP trim
- ❖ 24" Stone Guard on front
- ❖ 36" RV-style side and rear door with flush lock
- ❖ Non-powered roof vent or sidewall
- ❖ Exterior generator storage cabinet (on V-nose)
- ❖ NEMA L5-30R generator input (generator optional)

Exterior & Mechanical

- ❖ 15" Radial Tires / Silver Mod Wheels
- ❖ Tandem 3500 lbs spring axles with 4" drop and EZ lube hubs
- ❖ 2000 lbs triple steel tongue jack
- ❖ Std. trailer 7-way round electrical plug
 - ◆ 2 5/16" coupler
- ❖ LED Strip tail lights
- ❖ Two flush mount DOT strobes & area lights - all four sides

Structural

- ❖ 3/4" plywood floor/painted underneath
- ❖ Premium 3/8" plywood sidewalls
- ❖ 1"x1 1/2" steel tube in walls and ceiling
- ❖ 6" I-Beam main frame
- ❖ Wall members: 16" O.C.
- ❖ Floor cross-members: 16" O.C.
- ❖ Roof members: 24" O.C.
- ❖ Galvalume steel roof

Interior

- ❖ 84" (7') interior height
- ❖ 34"H x 24"D work counters
- ❖ Two 15"x18" Fiber entry doors
- ❖ Five cabinets and four storage drawers
- ❖ AC/Heat: 13,500 BTU

Electrical

- ❖ 50A Breaker panel (8 position)
- ❖ Seven bright LED strip light with switch
- ❖ 12V Dome light with switch
- ❖ Battery backup for lighting
- ❖ 110VAC GFCI outlets
 - ◆ 3x Interior / 3x Exterior

Options

- ❖ Add your logo onto trailer
- ❖ Pintle/Bulldog hitch
- ❖ WEN Super Quiet 4500-Watt Electric Start Dual Fuel RV-Ready Portable Inverter
- ❖ Upgrade axle:
 - ◆ 5200 lbs axle (15" tires)
 - ◆ 7000 lbs axle (16" tires)
- ❖ Add 18x48" exterior fold-down work table
- ❖ Raise trailer +4" for additional clearance
- ❖ Add flood lights over doors
- ❖ Add floor hatch (handhold/manhole access)
- ❖ Extra insulation in walls
- ❖ Upgrade HVAC
 - ◆ 15,000 BTU
 - ◆ 2x 15,000 BTU split
- ❖ Video surveillance
- ❖ Extra interior LED lighting
- ❖ Starlink Internet

Certification

- ❖ DOT Approved

Exterior Color Options



- ◆ These are just a few of the many colors we offer.
- ◆ No additional charge for color selection.
- ◆ We also offer CAD drawings at no additional charge

Specifications subject to change



Product Source International Datacomm
330 Franklin Turnpike; Mahwah, NJ 07430

201.488.6000
www.psitec.com
sales@psitec.com

