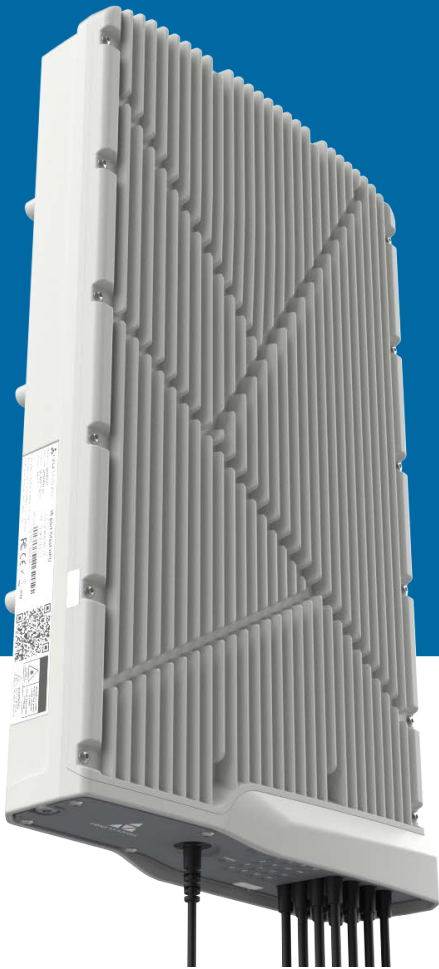
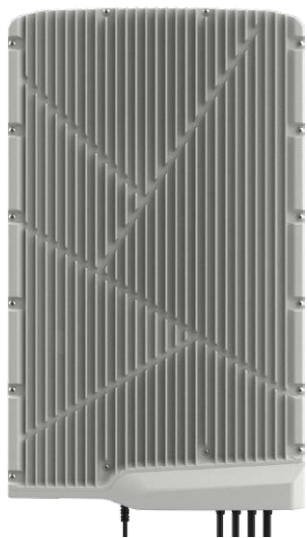


# 16-PORT GFAST DISTRIBUTION POINT UNIT (DPU)

DP160011



Designed to assist operators in maximizing revenue from a **Fiber-to-the-Home** (FTTH) deployment, particularly in scenarios where deploying the final fiber segment is difficult, expensive or impractical. The **NetComm DP160011 16-Port Gfast DPU** acts as a fiber extender, delivering gigabit-class service over the existing copper lead-in cable.



## HIGH SPEED BROADBAND

**Gfast 212MHz** provides aggregate speeds up to 2Gbps, enabling the delivery of fiber-equivalent gigabit services over legacy copper.



## REVERSE POWER

The DPUs are reverse powered by the **Network Termination Device** (NTD) installed in the end-user premises, avoiding the cost and delay associated with providing a local AC power connection and eliminating potentially difficult negotiations with apartment owners over access to, and charges for, AC power.



## ADVANCED REMOTE MANAGEMENT

The DPUs support **Netconf/YANG**, offering full remote device management and troubleshooting by using a Persistent Management Agent Aggregator (PMAA).



## ANYWHERE INSTALLATION

Silent, energy-efficient passive cooling design withstands a wide temperature range from -20°C to +65°C. Fully sealed waterproof outdoor housing with surge protection provides enhanced reliability even in the toughest conditions.

# TECHNICAL SPECIFICATIONS

## CONNECTIVITY

- › 1 x GPON (ITU G.984) port with fiber lead
- › 16 x Gfast (ITU G.993.2/G.9701) ports with 1-pair copper lead

## SUPPORTED STANDARDS

- › IEEE 802.1Q VLANs
- › IEEE 802.1Q Class of Service ("802.1p")
- › IEEE 802.1ad (Stacked VLANs)
- › IEEE 802.1ag
- › ITU Y.1731 (Fault Management and Performance Monitoring)
- › ITU G.993.2
- › ITU G.984 GPON
- › ITU G.988 OMCI
- › ITU G.9700 & G.9701 (G.fast)
- › Broadband Forum TR-156/TR-247/TR-255
- › Broadband Forum TR-301/TR-355 (DPU Management)

## POWER SUPPLY

- › **Input:** 60V/78W
- › Powered by NDD-03XX Gfast NTD
  - › **Output:** 60V/250mA max

## SAFETY STANDARDS

- › IEC/EN 62368-1 Audio/video, information and communication technology equipment - Part 1: Safety requirements

## EMC STANDARDS

- › EN 55032
- › EN 55035

## REGULATORY COMPLIANCE

- › CE
- › FCC
- › RoHS
- › WEEE

## DIMENSIONS & WEIGHT

- › 505mm (L) x 300mm (W) x 91mm (D)
- › 9.8kg approx.

## ENVIRONMENTAL PERFORMANCE

- › **Operating temperature range:** -20°C to +70°C
- › IP68 rated housing
- › Passively cooled
- › Maintenance free design

## DEPLOYMENT SCENARIOS:

Indoors, outdoors, on walls, in pits or on poles.

## KEY FEATURES

- › Gfast 212a profile
- › Full support for ITU G.9701 G.fast specification including Amendments 1, 2 & 3
- › Robust - designed for underground-pit, pole mount and wall-mount installations
- › Passive cooling design with a wide temperature range of -20°C to +70°C
- › K.45 surge protection
- › IP68 rated, industrial grade product that can be installed underground
- › Installation tool and accessories enable easy, quick and reliable installation
- › Magnetic button on front panel allows technicians to re-activate LEDs, reboot DPU or restore factory default settings with a magnetic wand
- › 1 x GPON (ITU G.984) port - outdoor-rated fiber lead with hardened connector
- › 16 x Gfast (ITU G.993.2/G.9701) ports with outdoor-rated copper lead

NetComm DP160011 16-Port Gfast DPU Spec Sheet Rev 5

Trademarks and registered trademarks are the property of NetComm Wireless Pty Ltd or their respective owners. Specifications are subject to change without notice. Images shown may vary slightly from the actual product.



**DZS**

HEADQUARTERS | TEXAS  
5700 Tennyson Pkwy  
Suite 400 Plano, TX 75024  
USA | +1 510 777 7000  
[www.dzsi.com](http://www.dzsi.com)



Product Source International Datacomm  
330 Franklin Turnpike, Mahwah, NJ 07430  
201.488.6000 Tel  
[www.psitec.com](http://www.psitec.com) / [sales@psitec.com](mailto:sales@psitec.com)